

JNC
INDUSTRIES

2026//



ONE INDUSTRIES:

Originating in 1997, ONE has always been at the forefront of global innovation, transcending conventional product boundaries. The ONE journey commenced with moto graphic kits and seat covers, evolving into industry-leading gear, helmets, gloves, and casual wear for riders worldwide who value meticulously engineered technical gear.

ONE then expanded its horizons, introducing cutting-edge mountain bike gear and helmets to the diverse product line. Despite growth, the unwavering philosophy persists – a dedication to crafting the finest products for riders.

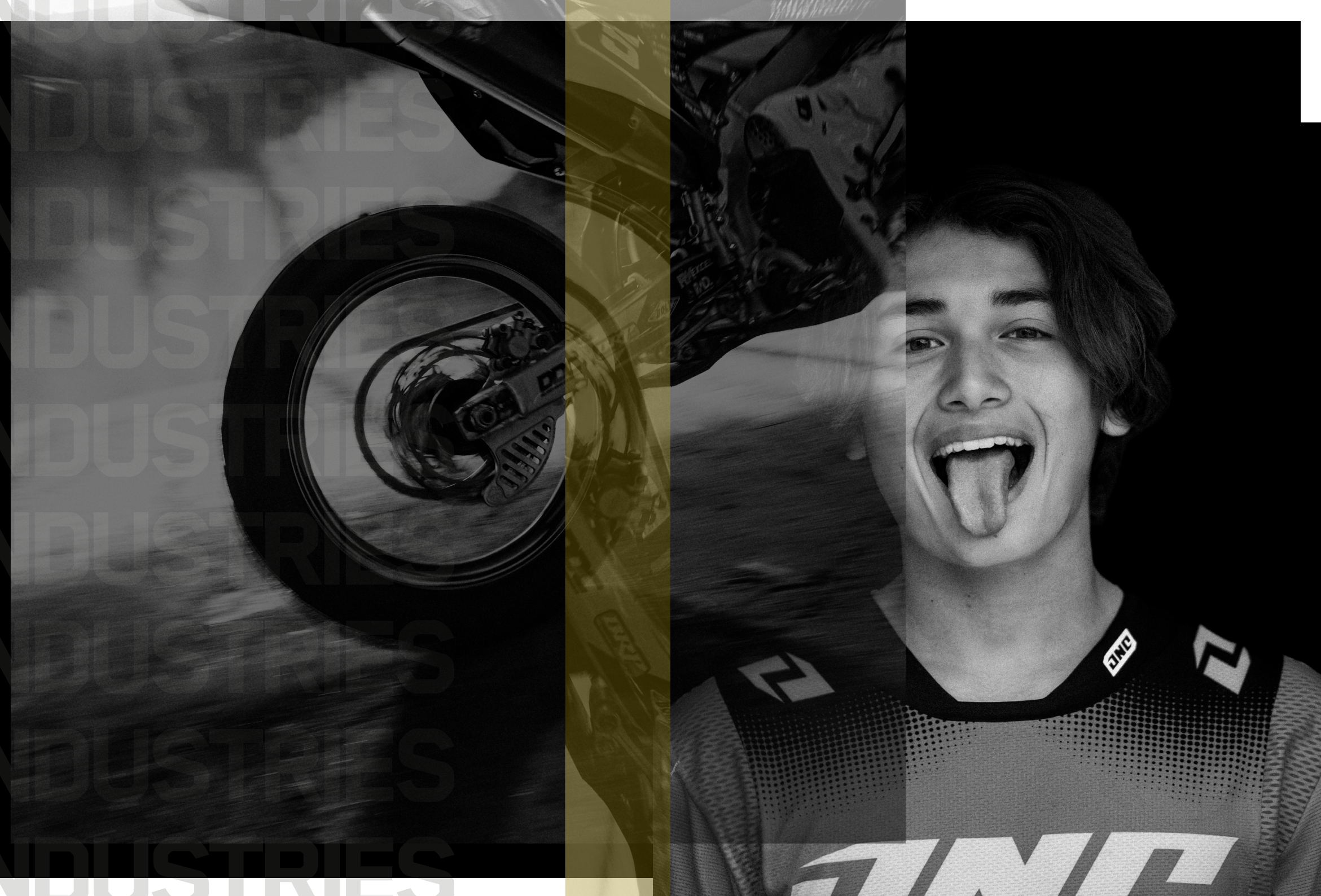
The recent ONE hiatus from the scene allowed us to introspect, ensuring that we could continue delivering revolutionary products with a fresh perspective. Returning revitalized, we bring not only technological prowess but an understanding that true innovation extends beyond product features.

While our products push technological boundaries, that will never be our message to consumers. It's a given for ONE. Riders, regardless of their skill level, will recognize that they are equipped with the best gear on the market. Period. Yet, beyond the products, we acknowledge that our riders seek something more – a unique experience beyond the technical aspects.

Our philosophy of “Engineered from Within” begins with the passionate individuals behind ONE – our designers, developers, riders, and the entire team shaping the brand each and every day. We proudly remain independent with the entire team deeply rooted in our sport, fostering an intrinsic determination to succeed. At ONE we want every rider to feel the exceptional and distinctive nature of being part of ONE.

Not about mass production. Not about cost cutting or sacrifice of quality for profit. The ONE product lines are painstakingly produced with quality first and often only available for a defined period. We apologize if this process may leave inventory unavailable from time to time but doing so shall ensure quality and exclusivity with a connection that transcends the ordinary.

Welcome to the future of ONE.



WELCOME TO



You have been *invited* to carry ONE Industries product

WHAT DOES THIS MEAN?

ONE Industries is a premium range of products hand crafted for the true enthusiast. ONE product will not be sold to every dealer! In fact, there will be a limited number of dealers that will be carrying the ONE Industries range.

WHY ONLY SELL TO A HANDFUL OF DEALERS (PREFERRED PARTNERS)?

We want to work with dealers who are preferred partners. Being a ONE Industries dealer means very few other dealers will have this range of product. Further, all Preferred Partners will be able to represent the line properly, both online and in-store, in their regions that customers can refer to. We will work closely to support every Preferred Partner to make sure the brand is promoted and sold as the true stand-out, innovative and premium brand that it is.

HOW IS THIS CARRYING ONE INDUSTRIES DIFFERENT FROM CARRYING OTHER PRODUCTS?

We are only working with a small number of dealers. Each dealer will have direct contact to the team running ONE Industries - from sales to marketing to product to customer service. There will be dedicated contacts for immediate support on any aspect of your running of ONE Industries. We will work together with all partners to protect the exclusivity and uniqueness of ONE and have hand-picked only those dealers who we believe understand our vision and have the customer base and marketing to support our launch.

WHAT ARE THE TERMS AND CONDITIONS OF BEING A ONE INDUSTRIES DEALER?

- You simply agree to carry the line for one year at a time
- You agree to keep a full range of goods in stock so that the line has sizes and colors available to consumers everyday
- You can return goods for exchange (different size, different colors) at anytime

WILL ONE INDUSTRIES EVER SELL CONSUMER DIRECT?

Yes. Retail consumers can buy direct also at full RRP every day. No discounts. Retail consumers will also be directed to our nearest dealer where and when possible, by market.

CAN I SHIP ONE INDUSTRIES GOODS WITH OTHER GOODS I CURRENTLY BUY FROM O'NEAL EUROPE (O'NEAL, AZONIC, ETC)?

Absolutely! O'NEAL Europe is the exclusive distribution arm of ONE Industries in Europe and Overseas (outside of the Americas and Australia/ NZ).

WHAT KIND OF ONE INDUSTRIES SIGNAGE CAN I GET FOR MY STORE?

Every retail store is different. For this reason, we will visit your store and meet with you to listen to what you think would work best for promoting ONE in the style, color and size especially to fit your store. ALL cost to implement ONE signage and displays are covered pending approval. Often times this can be clothing racks, signs, lighting or window coverings. We appreciate that no-one knows your store better than you do. For this reason, you decide what looks best. It's not a one size, one sign fits all solution. As you will soon learn, everything done with ONE is in fact elevated. The same applies to online. At launch we will have a Media Center ready with full exclusive access to our handful of preferred partners. This will include 1000s of images, many video edits (from long 5m YouTube 'story telling' cuts down to short 10/15/20s social media edits). We have banners, email templates, etc all ready to go and to work with you to build the ultimate online 'shop-in-shop' for ONE.

WHAT DOES ONE INDUSTRIES DO ABOUT PRODUCT WARRANTY WITH MY CUSTOMERS?

ONE Industries carries a NO QUESTIONS ASKED warranty policy. If a customer come in and claims a warranty there is nothing to worry about. If you say it is a warranty, that's good enough for us! You can receive a product replacement or a product credit, whichever you choose. You simply need to send a pic via email or text direct to us and that's it. We will take care of the rest.

WILL ONE INDUSTRIES BE INTRODUCING ENTRY-LEVEL PRODUCT?

No. ONE Industries is designed, developed and produced cutting no corners. Premium in all facets of the product and this will not change.





MX HELMETS //

ENGINEERED FROM WITHIN IS THE PHILOSOPHY
WE LIVE AND DIE BY AT ONE.

Our helmet range is no different.

3 years in the making, and harnessing the very latest ground-breaking technology from MIPS, the attention to detail through everything from shell construction to graphics, finish, fit, comfort and weight is second to none and stays true to that core philosophy.

The X-197 is the carbon offering complete with best-in-market premium helmet bag and first-to-market 'invisible' MIPS Integra TX technology, incorporated directly into the helmet's comfort liner.

The X-297, in fiberglass construction, is offered in several bold colours from Electric Red to Cobalt Blue and more.

NO CORNERS CUT.
FROM DESIGN THROUGH TO TECHNOLOGY.

ENGINEERED FROM WITHIN.





X-197

X-197

X-197



Mips | INTEGRA
TX

The Mips® Integra TX system complements the traditional fabric-and-foam comfort padding with an integrated low-friction layer. The system provides movement to help reduce rotational motion to the head in certain angled impacts, without altering comfort and fit or adding weight to the helmet.

When a helmet is impacted at an angle, it can cause the head to rotate suddenly and violently. This is a common source of concussions and brain injury. The Mips® Integra TX system is designed to provide movement inside the helmet to help reduce the rotational motion to the head in certain angled impacts, thereby lowering the risk of such injuries. A 0.1 mm low-friction layer is sewn into the comfort padding. This makes for an invisible and fully integrated system – a comfortable solution that does not alter the fit or weight of the helmet.

MIPS TECHNOLOGY

- Harnessing the latest ground-breaking MIPS technology
- Used and tested in Moto GP
- ONE proudly introduces Integra TX for the first time in the MX market
- Rotational impact protection incorporated inside the comfort liner with no additional components
- Zero additional stack height or weight

X-197 HELMET TECHNOLOGY //



- » Lightweight full carbon-fiber shell construction
- » Shell weight: 1250g (±50g) in size M
- » DOT and ECE06 certified
- » MIPS® Integra TX technology
- » Invisible and fully integrated into the Helmet's comfort liner
- » As used in MotoGP and introduced for the first time to the MX market with the X-197 Helmet
- » Provides movement to help reduce rotational motion to the head in certain angled impacts, without altering comfort and fit or adding weight to the helmet
- » Ultra-soft, removable, quick-drying, fast-wicking and washable
- » Best-in-class premium fleece lined Helmet bag with rubber base and internal storage for spare parts and more
- » Adjustable replaceable visor for personalized angle adjustment
- » Breakaway screws for enhanced crash safety with replacement breakaway and aluminum screw options included
- » Emergency quick-release cheek pads
- » Maximum ventilation with over-sized intake vents, EPS channels and exhaust vents to maximize airflow throughout the helmet
- » Ultra-soft, removable, quick-drying, fast-wicking and washable cheek pads to help stay cool and dry while riding
- » Rubber nose guard to protects against roost
- » Screened mouth vent air intake to allow airflow while keeping out debris
- » Replacement parts: MIPS® liner, cheek pads, visors and screws



X-197 HELMET //

	XS	S	M	L	XL	2XL
L001-00**	11	12	13	14	15	16





X-297 HELMET TECHNOLOGY //

- » Lightweight full fiberglass shell construction
- » Shell weight: 1300g (±50g) in size M
- » DOT and ECE06 certified
- » MIPS® Evolve Core technology
- » Low friction refined
- » The world's leading rotational management system designed to help deflect rotational movement in angled impacts
- » Helps to reduce the rotational movement of the head during crashes, lowering the risk of such injuries
- » Replaceable visor
- » Breakaway screws for enhanced crash safety with replacement breakaway and aluminum screw options included
- » Emergency quick-release cheek pads
- » Maximum ventilation with over-sized intake vents, EPS channels and exhaust vents to maximize airflow throughout the helmet
- » Ultra-soft, removable, quick-drying, fast-wicking and washable liner and cheek pads to help stay cool and dry while riding
- » Rubber nose guard to protect against roost
- » Screened mouth vent air intake to allow airflow while keeping out debris
- » Replacement parts: liner, cheek pads, visors and screws



Mips | EVOLVE
CORE

LOW FRICTION REFINED.

The MIPS® Evolve Core system is based on the attachment of a low-friction layer to the inner surface of the helmet's energy-absorbing liner. This layer is permitted to move in all directions to help divert rotational motion from the head in certain angled impacts. The comfort padding is fixed to the interior of the low-friction layer.

Instead of attaching the comfort padding directly to the energy-absorbing liner, it is attached to the inside of the MIPS® Evolve Core low-friction layer. This layer can either be injection-molded or vacuum-formed. It is then attached to the energy-absorbing liner with elastic rubber fixations or fabric pockets.



FOCUS WHITE/GRAY



FOCUS STONE/GRAY



FOCUS ELECTRIC RED



HORIZON COBALT BLUE



HORIZON BLACK/GRAY



HORIZON SLATE GRAY

X-297 HELMET //

		S	M	L	XL	2XL
FOCUS WHITE/GRAY	L200-08**	02	03	04	05	06
FOCUS STONE/GRAY	L200-09**	02	03	04	05	06
FOCUS ELECTRIC RED	L200-03**	02	03	04	05	06
HORIZON COBALT BLUE	L200-10**	02	03	04	05	06
HORIZON BLACK/GRAY	L200-011**	02	03	04	05	06
HORIZON SLATE GRAY	L200-019**	02	03	04	05	06



MX GEAR //

The brief was simple.

**SIMPLE TO EXPLAIN EVEN IF FAR FROM SIMPLE TO DELIVER.
PRODUCE THE BEST MOTO GEAR ON THE MARKET, PERIOD.**

The ONE Industries X-197 gear takes our own product journey one step beyond. Sourcing the very best fabrics available to deliver next level freedom-of-movement on the bike alongside small meticulously thought-out features only found on ONE gear and nowhere else.

The sum of all of the extras the gear delivers offers something above and beyond what is currently available on the market from incremental waist sizes on the pants with single inch increases in key sizes, longer leg options for the taller rider, magnetic closures buttons, linerless taped seamless construction....and so the list goes on.

Beyond the technical features and benefits many of the graphics and colors are available in limited runs meaning not only will you have something unique that's never been seen before.... you may well be the only rider you see on track wearing that particular gear kit.



X-197 JERSEY TECHNOLOGY //



With the first release of our new MX Jersey line we had one aim only and that was to produce the best product on the market from fabrics to features including some unique touches never seen before in a moto jersey.

- » Next level freedom-of-movement and comfort with true 4-way stretch race fabric throughout main body and arms
- » Freedom-of-movement is enhanced with the Rider-Race 45 degree pre-bent articulated arms
- » Ultimate cooling thanks to oversize lazer-cut silicone-edged intake and outlet vents in upper arm and torso
- » Cooling is enhanced further with 360 degree vented material between the arms and torso
- » Unencumbered riding with one of the lightest jerseys on the market weighing only 6.7oz in size L
- » The minimal weight of the jersey is complemented by the slim fitting tapered race cut on both the body and arms
- » Maximum comfort with Infinity-Zero cuffs and collar
- » Equipped with a silicone printed drop tail ensuring the jersey stays in place when riding

INFINITY ZERO COLLAR

1

ENHANCED COOLING
WITH 360 DEGREE
VENTED MATERIAL
BETWEEN ARMS AND
TORSO

2

OVERSIZED LASER-CUT SILICONE LINED
INTAKE AND OUTLET VENTING

3

DROP TAIL TO ENSURE JERSEY
STAYS IN PLACE WHILE RIDING

6

5

RIDER-RACE 45
DEGREE PRE BENT
ARTICULATED ARMS





X-197 PANT TECHNOLOGY //

With the first release of our new MX Pant line we had one aim only and that was to produce the best product on the market from fabrics to features including some unique touches never seen before in a moto pant

- » Next level freedom and comfort with true 4-way race stretch fabric in critical areas exposed to maximum movement around the front knees/ lower legs and seat
- » More durable 2-way stretch materials in more static movement areas around the front upper leg areas
- » Freedom-of-movement is enhanced with the Rider-Race 45 degree pre-bent articulated legs
- » Ultimate cooling thanks to oversize lazer-cut silicone-edged intake vents in the upper legs
- » The pants are kept in places with a 360 belt complete with double magnet and secure ratchet closure
- » All day comfort with stitchless welded and taped seam construction
- » Increased comfort and decreased weight as the construction means no liner is required
- » Find your perfect fit with incremental waist sizing available on selected colors (31, 33, 35 in addition to std)
- » Long leg (+3") available on selected colors (32L, 34L, 36L)
- » Oversized knees sized for knee brace compatibility with additional padding and rubber logo for increased durability



SCORCH RED //

	S	M	L	XL	2XL	
Q001-03**	02	03	04	05	06	
	28	30	32	34	36	38
U001-03**	28	30	32	34	36	38



UNO BLACK //

	S	M	L	XL	2XL				
Q001-01**	02	03	04	05	06				
	28	30	31	32	33	34	35	36	38
U001-01**	28	30	31	32	33	34	35	36	38
ADULT LONG				32L	34L		36L		

Incremental waists and extended legs available in certain sizes





WHITE OUT //

Q002-080*

S	M	L	XL	2XL
02	03	04	05	06

U002-08**

28	30	32	34	36	38
28	30	32	34	36	38

WHITE OUT //





ORANGE DAZE //

	S	M	L	XL	2XL	
Q002-050*	02	03	04	05	06	
	28	30	32	34	36	38
U002-05**	28	30	32	34	36	38



BLOX BLUE //

	S	M	L	XL	2XL	
Q002-000*	02	03	04	05	06	
	28	30	32	34	36	38
U002-00**	28	30	32	34	36	38

BLOX BLUE //





YOUTH NEON NAVY //

	S	M	L	XL
Q011-40**	02	03	04	05
	22	24	26	28
U011-40**	22	24	26	28





YOUTH SCORCH RED //

	S	M	L	XL
Q011-03**	02	03	04	05
	22	24	26	28
U011-03**	22	24	26	28

X-297 JERSEY TECHNOLOGY //



- » Next level freedom-of-movement and comfort with true 4-way stretch race fabric throughout main body and arms
- » Improved cooling with rear vented material between the arms and torso
- » Lightweight fabrics and construction to further enhance the overall freedom-of-movement while riding
- » Weight size Large = 6.4 oz
- » Athletic fitting, race-cut tapered body and tapered raglan sleeves
- » Maximum comfort with full stretch, stitched Infinity-Zero cuffs and collar
- » Ensuring the jersey to pant combo works effortlessly with a drop tail keeping the jersey in place when riding
- » The drop tail is complemented by minimal clear silicone tail print to keep the jersey tucked in at all times





X-297 PANT TECHNOLOGY //

- » Durable and lightweight 2-way stretch materials in the upper and lower legs for freedom-of-movement while riding
- » Industry leading 4-way stretch included in the back of the legs and knee for improved movement
- » Optimal fit is enhanced with the Rider-Race 45 degree pre-bent articulated legs
- » Increased durability with 600D seat and inner leg areas
- » Triple stitched on all high stress seams for enhanced durability
- » Slim-fit race-cut upper paired with a tapered lower leg for optimal fit
- » Internal 'no ouch' zipper cover
- » The pants are kept in place with a 360 hidden internal Zero Belt complete with secure ratchet closure
- » Internal silicone waistband to complement the jersey silicone tail print to keep tucked in at all times
- » Full-grain cowhide leather triple stitched inside knees for maximum durability



BLACK SMOKE //

	S	M	L	XL	2XL	
Q101-10**	02	03	04	05	06	
	28	30	32	34	36	38
U101-10**	28	30	32	34	36	38



YOUTH BLACK SMOKE //

	S	M	L	XL
Q111-10**	02	03	04	05
	22	24	26	28
U111-10**	22	24	26	28

BLACK SMOKE //





NEON TIGER //

Q101-40*

S	M	L	XL	2XL	
02	03	04	05	06	
28	30	32	34	36	38
28	30	32	34	36	38



YOUTH NEON TIGER //

Q111-40**

	S	M	L	XL
	02	03	04	05
	22	24	26	28
U111-40**	22	24	26	28



DESERT RED //

Q101-30**

S	M	L	XL	2XL
02	03	04	05	06

U101-30**

28	30	32	34	36	38
28	30	32	34	36	38

DESERT RED //





MIAMI WHITE //

	S	M	L	XL	2XL	
Q101-80*	02	03	04	05	06	
	28	30	32	34	36	38
U101-80**	28	30	32	34	36	38

THE PERFECT GLOVE LINEUP //

Unlike other glove offerings, ONE Gloves don't simply add TPRs or silicone to make different model offerings. The ONE Industries Glove line-up focuses on personal choice, feel, and allows truly different glove options based solely around rider preference. Having true innovative unique offerings allows selecting the perfect glove for each rider easier than ever before and enables the same rider to select different gloves for different riding conditions.

The G-197 introduces for the first time in moto a top golf type closure glove. This enables the material across the palm to be stretched tight to eliminate bunching when holding the grips.

The X-197 glove offers rubber protection on the knuckles and a secure wrist closure that many experienced moto riders are accustomed to.

If minimalist is more your thing, then the V-197 is just the right fit. This simple slip-on offering with an extended wrist does away with a strap closure and offers increased venting both on the palm, side fingers and also the topside ensuring you never over-heat.



G-197 GLOVE TECHNOLOGY //



- » Reduce/ eliminate palm bunching and blisters with our unique top closure on the back of the hand
- » The unique closure system allows the palm material to be pulled tight like a drum so when the hand tightens around the grips there are fewer creases of material vs traditional closure gloves
- » Easy to open, close and adjust with the ONE Industries icon raised rubber patch pull tab on back of hand
- » Super soft against the skin, sweat removing Nanofront palm
- » Ultimate comfort thanks to seamless Nanofront roll-over finger tips
- » Enhanced comfort with first-of-its-kind unique seamless Nanofront roll-over thumb
- » Seamless Nanofront roll-over edge of pointer finger
- » 4-way stretch finger and thumb side gussets
- » 4-way stretch breathable, fast-wicking, quick-drying pattern hand fabric
- » Increased durability with double layer thumb guard
- » Improved grip with silicone prints on first 2 fingers



VIVID NEON	S	M	L	XL	XXL
X100-04**	08	09	10	11	12



UNO BLACK	S	M	L	XL	XXL
X100-01**	08	09	10	11	12



X-197 GLOVE TECHNOLOGY //



- » Secure and comfortable fit with snag-free hook-and-loop wrist closure
- » Easy to pull on and off with extended pull-tab past wrist
- » Comfortable against the skin at the wrist opening thanks to 4-way stretch solid Lycra edging
- » Super soft against the skin, sweat removing Nanofront palm
- » Ultimate comfort thanks to seamless Nanofront roll-over finger tips
- » Enhanced comfort with first-of-its-kind unique seamless Nanofront roll-over thumb
- » 4-way stretch finger and thumb side gussets
- » 4-way stretch breathable, fast-wicking, quick-drying pattern hand fabric
- » Increased protection and durability with sonic rubber back of finger and hand patches (no stitch)
- » Increased durability with double layer thumb guard
- » Improved grip with silicone prints on first 2 fingers and palm



CORE BLACK	S	M	L	XL	XXL
X200-01**	08	09	10	11	12
YOUTH	S	M	L	XL	
X210-01**	08	09	10	11	



HALT RED	S	M	L	XL	XXL
X200-03**	08	09	10	11	12
YOUTH	S	M	L	XL	
X210-03**	08	09	10	11	





V-197 GLOVE TECHNOLOGY //

- » Minimalist comfort with a cuffless slip-on design
- » Increased comfort thanks to extended wrist coverage
- » Comfortable against the skin at the wrist opening thanks to Zero Infinity cuffless design and construction
- » Stay cool and dry all day with lazer cut over-sized ventilation holes back of hand
- » Enhanced cooling with lazer cut finger ventilation holes
- » Super soft against the skin, sweat removing Nanofront palm
- » Ultimate comfort thanks to seamless Nanofront roll-over finger tips
- » Enhanced comfort with first-of-its-kind unique seamless Nanofront roll-over thumb
- » 4-way stretch finger and thumb side gussets
- » 4-way stretch breathable, fast-wicking, quick-drying pattern mesh fabric
- » 4-way stretch solid hand fabric towards base of glove and wrist
- » Increased durability with double layer thumb guard



ICE WHITE	S	M	L	XL	XXL
X300-08**	08	09	10	11	12



CHILLZ BLACK	S	M	L	XL	XXL
X300-01**	08	09	10	11	12



BLACK ONYX



FOCUS WHITE/GRAY



FOCUS STONE/GRAY



FOCUS ELECTRIC RED



HORIZON COBALT BLUE



HORIZON BLACK/GRAY



HORIZON SLATE GRAY



G-197 UNO BLACK

V-197 ICE WHITE



V-197 CHILLZ BLACK

G-197 VIVID NEON



X-197 CORE BLACK
ADULT + YOUTH

X-197 HALT RED
ADULT + YOUTH

UNO BLACK

WHITE OUT

ORANGE DAZE

BLOX BLUE

SCORCH RED
ADULT + YOUTH

NEON NAVY
YOUTH ONLY



BLACK SMOKE
ADULT + YOUTH

DESERT RED

MIAMI WHITE

NEON TIGER
ADULT + YOUTH



TEXTILE OVERVIEW

CASUAL //



REPEAT HOODIE//



- » A snug yet not overly tight or excessively loose sensation for just the right fit
- » Quilted outer fabric with stitched ONE Industries icon repeat pattern throughout
- » Super soft silk-feel full inner lining throughout
- » Warm and wind-resistant
- » High quality over-sized front full length zipper with ONE Industries custom MX grip pull tab
- » Sewn and rubber patch label details throughout
- » Thick ribbed cuffs and hem
- » 2 generous side hand pockets
- » Drawcord hood



HEATHER GRAY	S	M	L	XL	2XL
Z002-00**	02	03	04	05	06

CASUAL //



		S	M	L	XL	XXL
VECTOR BLACK	Z003-2**	22	23	24	25	26
MYPSPACE INDIGO	Z003-1**	22	23	24	25	26
HORIZON BLACK	Z003-0**	12	13	14	15	16
VECTOR CARDINAL	Z003-2**	32	33	34	35	36
HORIZON MILITARY GREEN	Z003-0**	02	03	04	05	06
VECTOR DARK HEATHER	Z003-2**	02	03	04	05	06
BX HEAVY BLACK	Z003-1**	32	33	34	35	36



VECTOR BLACK



MYPSPACE INDIGO



VECTOR DARK
HEATHER



HORIZON BLACK



VECTOR CARDINAL



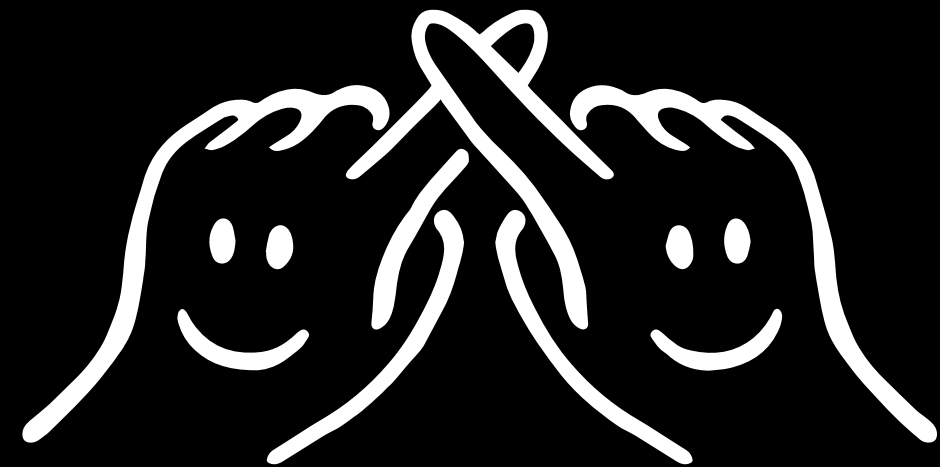
HORIZON MILITARY
GREEN



BX HEAVY
BLACK



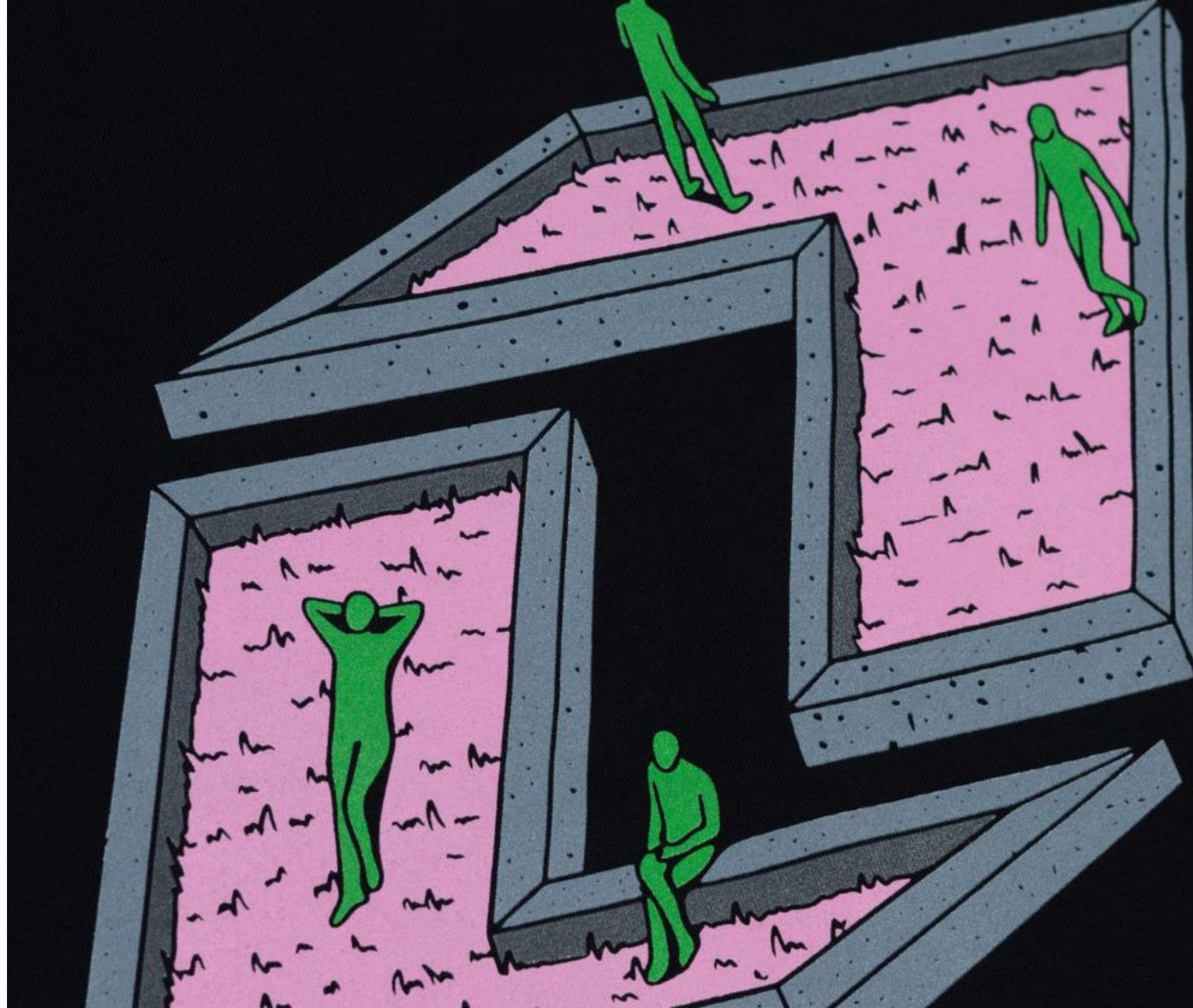
ONE INDUSTRIES



PLUS SIX TWO

A ONE INDUSTRIES CASUAL LINE FEATURING A KH62 TWIST





ONE INDUSTRIES

	S	M	L	XL	XXL
ART PARK BLACK	02	03	04	05	06

FEATURES:

- » Boxy, oversized fit with dropped shoulders
- » Heavy weight, 7oz 100% carded cotton tee



		S	M	L	XL	XXL
BLOSSOM OCEAN	Z003-K0**	32	33	34	35	36

- FEATURES:**
- » Relaxed fit
 - » Heavy weight, 6.5oz 100% combed cotton tee

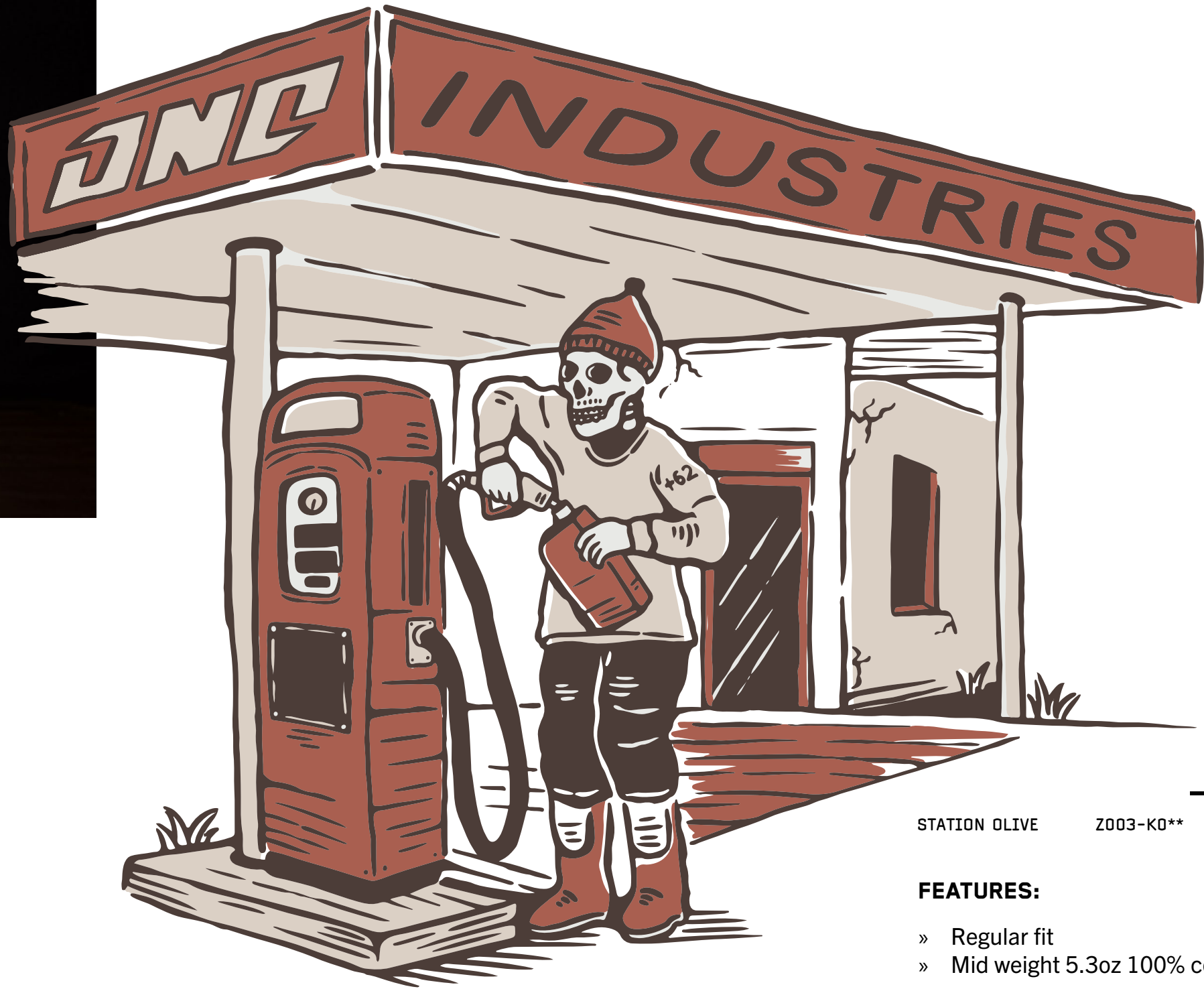


> BLOSSOM OCEAN





> STATION OLIVE



	S	M	L	XL	XXL
STATION OLIVE	02	03	04	05	06

FEATURES:

- » Regular fit
- » Mid weight 5.3oz 100% combed cotton tee



> STROKES SAND

ONE
IND
UST
RIES



		S	M	L	XL	XXL
STROKES SAND	Z003-K0**	72	73	74	75	76

FEATURES:

- » Boxy, oversized fit
- » Ultra heavy weight 8.3oz 100% carded cotton



> UNO SLATE



ONE INDUSTRIES

		S	M	L	XL	XXL
UNO SLATE	Z003-K0**	62	63	64	65	66

- » Relaxed fit
- » Heavy weight 6.5oz 100% combed cotton tee



A ONE INDUSTRIES CASUAL LINE FEATURING A KH62 TWIST



> ART PARK BLACK



> BLOSSOM OCEAN



> STROKES SAND



> STATION OLIVE



> UNO SLATE



CASUAL //



CUBE



VERT



WATERMARK

CUBE BLACK	#Z000-00*
VERT BLACK	#Z000-00*
WATERMARK GRAY/ BLACK	#Z000-00*





ONE IND. TEAM //

JULIEN "JUJU" BEAUMER
JORGE ZARAGOZA
KELANA HUMPHREY
LINKON LEAVERTON
WYATT "WYO" FONTENOT
LORENZO CAMPORESE

JOIN THE MOVEMENT //

By becoming a ONE Industries Dealer, we ask that all Dealer Partners carry range that covers all sizes in their chosen graphics and colors. This would ensure when the consumer is shopping for the item(s) that they desire, they are not left leaving the store or website to purchase elsewhere.

Benefits to being a ONE Industries exclusive partner.

- Rotate product upon request
- No questions asked warranty policy

WELCOME TO THE ONE INDUSTRIES TEAM!

You can contact us by email or phone call directly to the team managing ONE or pick up the phone in the old fashioned way. Our international team lives and breathes what we do and between us we never stop. You'll always speak to someone who's knowledgeable and able to respond for all aspects of the brand from products to sales to marketing. So any question or issue, big or small, we invite you to get in touch.





oneindustries.eu
info@gravitysportsgroup.eu

 @oneindustries
 @oneindustries
 @one_industries
 @oneindustries

ONE